

NTB-2R

Room & Floor Thermostat



Elin Ausen Idsø

NTB-2R ROOM & FLOOR THERMOSTAT

- New and modern design.
- Large color display with digital temperature setting.
- For wall box mounting
- Radio receiver for Nobø Energy Control

•Technical data

Rated voltage:	230V~
Rated current:	16 A
Casing class:	IP20
Cut-off function:	1-pole
Ambient temperature - operation:	-40°C to +40°C

- Floor sensor included in the box: NTC, 22kOhm at 25°C (same as TRB36 for easy replacement)

Also compatible with:

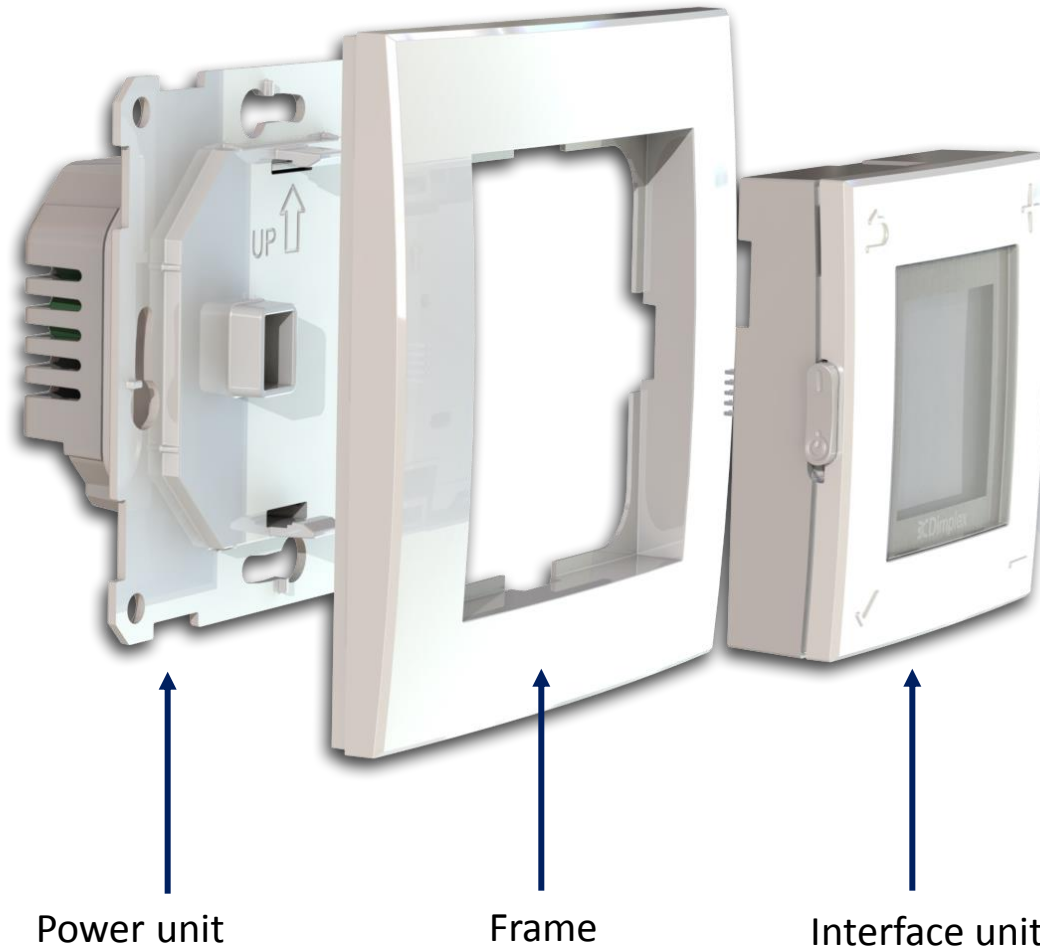
10kOhm v/25°C (Dimplex 2NC9 885)

12kOhm v/25°C (Micro Matic)

15kOhm v/25°C (Nobø T32, other old Nobø)

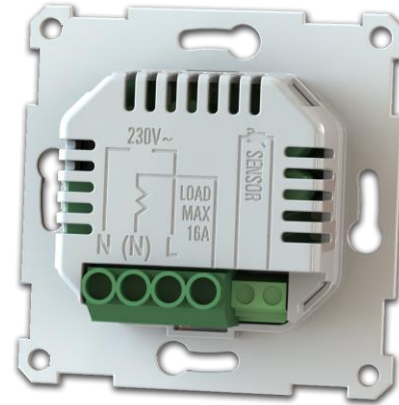


PRODUCT ARCHITECTURE

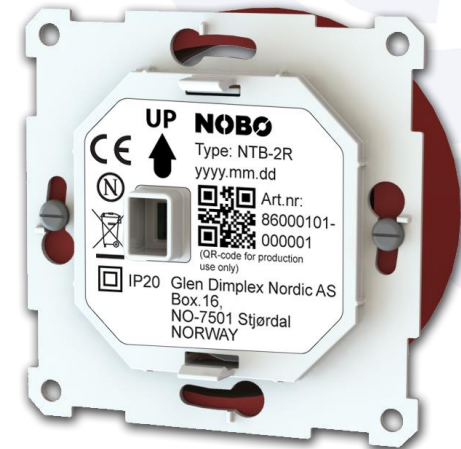
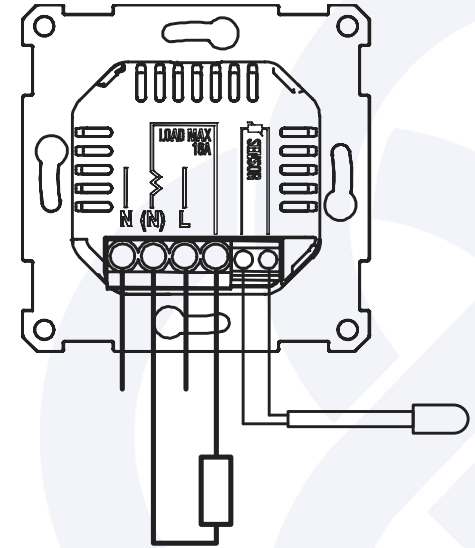
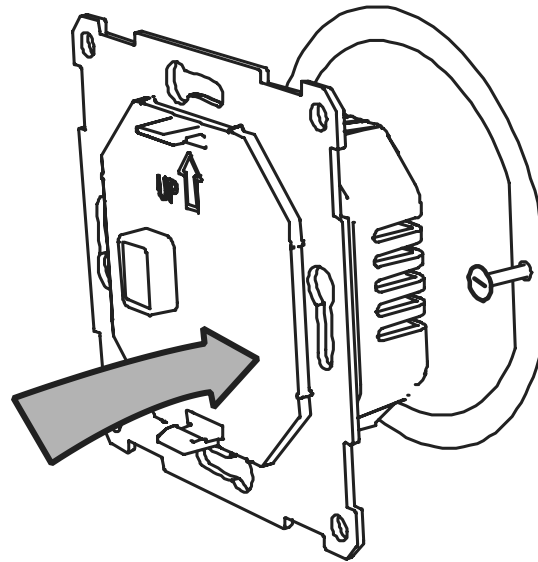


INSTALLATION

- Load, sensor and power connected at the back.



- Shallow Power unit
– only 22-25 mm.
Gives plenty of space
inside the wall box.



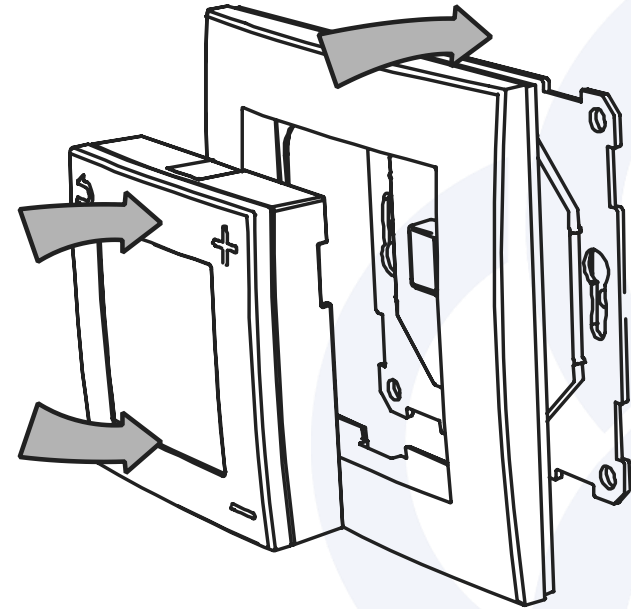
INSTALLATION

- Frame and Interface Unit click into place.

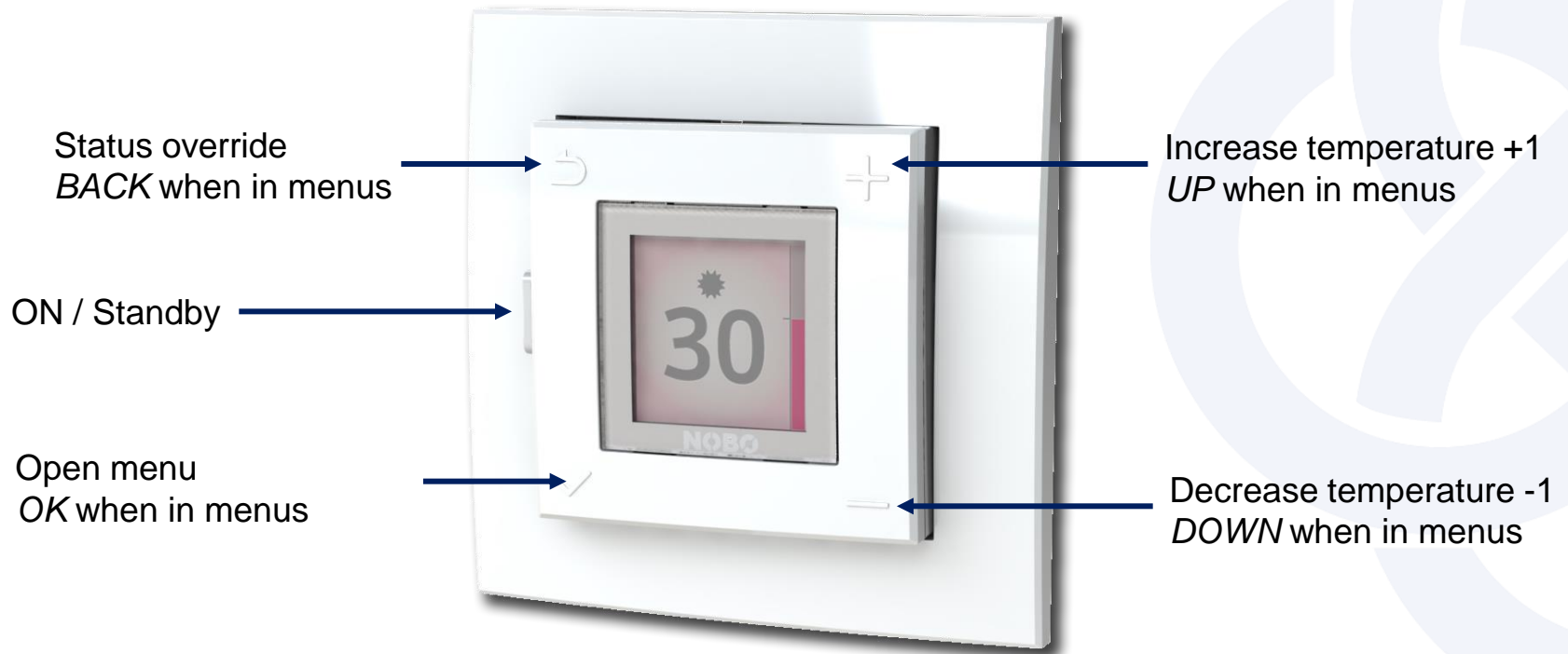
No extra screws!

- All electronics are covered during installation.

No hazard!



BUTTONS AND SWITCHES



MAIN SCREEN AND OPERATION

A. Set temperature

B. Current status:

- ☀ Comfort (Red background)
 - ☾ Eco (Green background)
 - ❄ Away (Blue background)
 - ⊘ Off (Grey background)
- } Only available with Nobø Energy Control



C. Thermometer showing the measured temperature on the sensor.

The small horizontal marker corresponds with the set temperature.

The colored column will rise and fall according to the measured room or floor temperature.

When the heating element is on, the top of the colored bar pulsates.

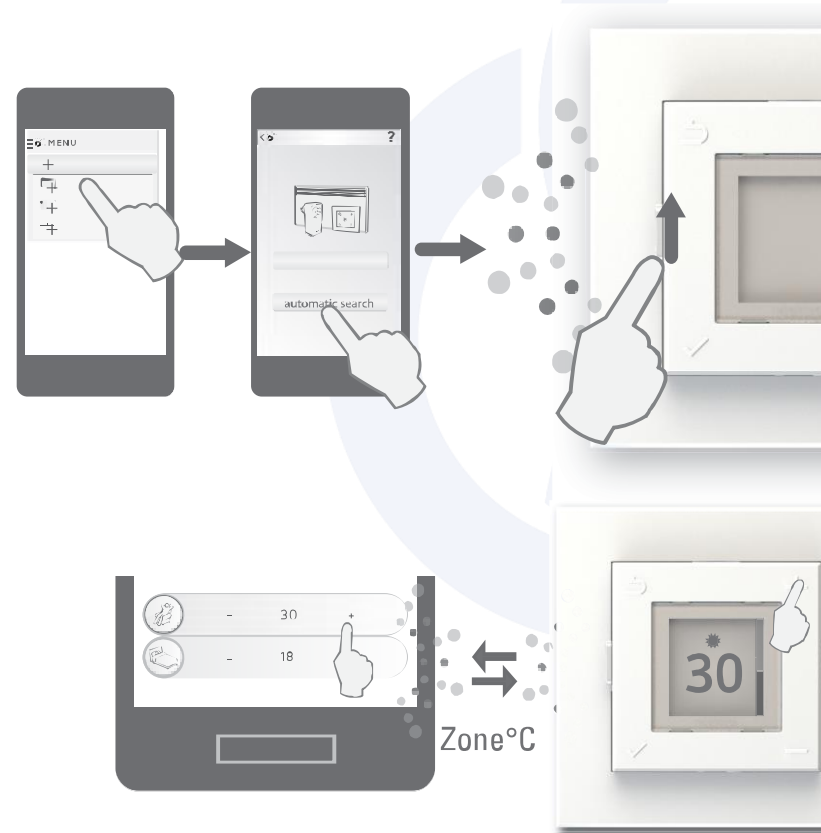
FAST INSTALLATION

- Setup wizard at first time startup
(or when the power has been completely disconnected).
- Languages: Norwegian and English
- To use default settings – press «Hopp over/Skip».
NTB-2R automatically detects if a floor sensor is connected. The default is 22kOhm at 25°C.
If no floor sensor is detected, NTB-2R automatically selects room sensor as default.



NOBØ ENERGY CONTROL

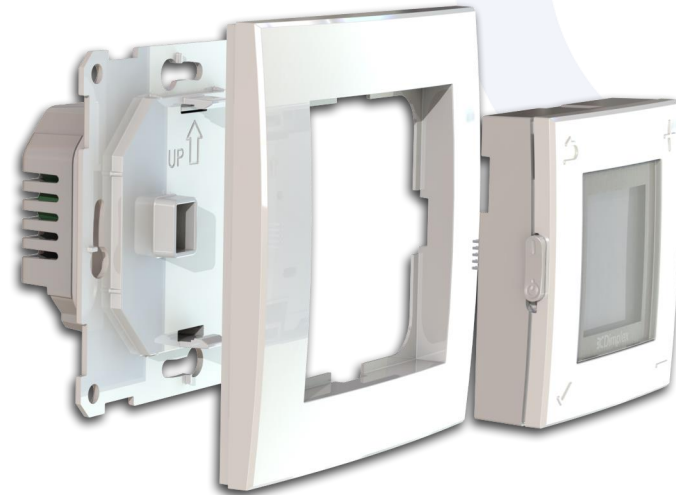
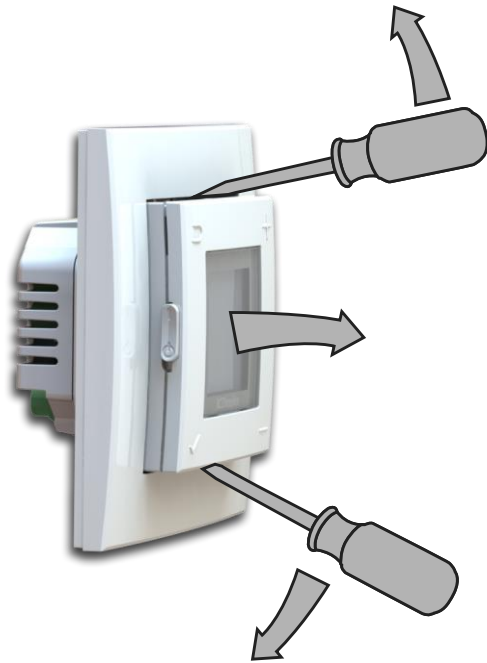
- Connect to Nobø Energy Control with Automatic search:
Slide the power switch from standby to on.



- Temperature setting can be done in the app or on the thermostat.
The temperature settings are automatically synchronised.

EASY SERVICE

- The Interface Unit can be removed and replaced by the customer, without disconnecting the product from mains. No need for service personnel to do the job.



OTHER IMPROVEMENTS

- High quality display
- Switch mode power solution
- Triac relieving the relé for extra long service life.
- Stand by < 0.5W